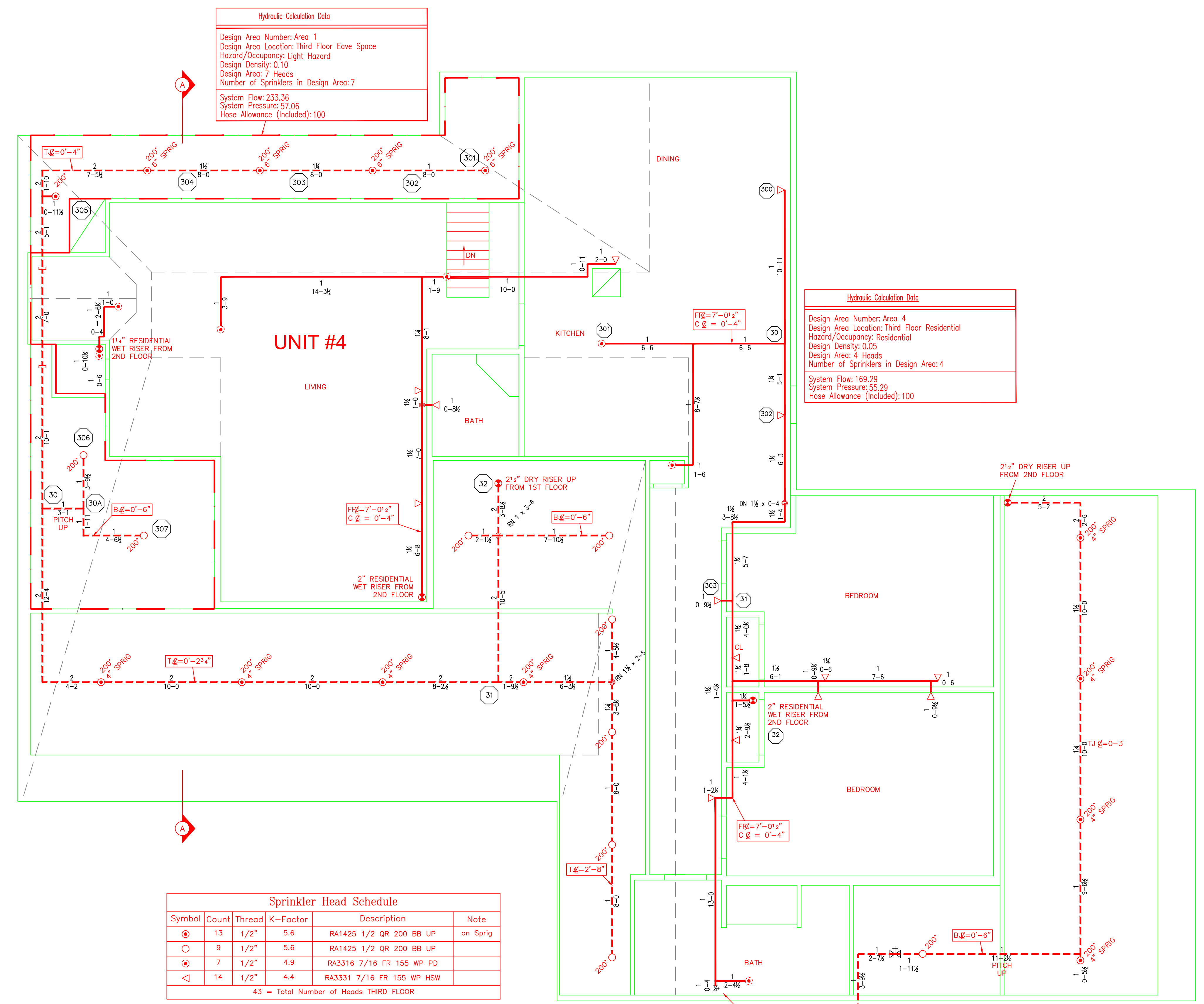


Sprinkler Head Schedule					
Symbol	Count	Thread	K-Factor	Description	Note
⊙	3	1/2"	5.6	RA1425 1/2 QR 200 BB UP	
⊙	3	1/2"	4.9	RA3316 7/16 FR 155 WP PD	
◁	38	1/2"	4.4	RA3331 7/16 FR 155 WP HSW	
44 = Total Number of Heads SECOND FLOOR					

1 SECOND FLOOR
FP-02 ELEV 17'-2 1/2"
TOS 20'-0"



Sprinkler Head Schedule					
Symbol	Count	Thread	K-Factor	Description	Note
⊙	13	1/2"	5.6	RA1425 1/2 QR 200 BB UP	on Sprig
⊙	9	1/2"	5.6	RA1425 1/2 QR 200 BB UP	
⊙	7	1/2"	4.9	RA3316 7/16 FR 155 WP PD	
◁	14	1/2"	4.4	RA3331 7/16 FR 155 WP HSW	
43 = Total Number of Heads THIRD FLOOR					

2 THIRD FLOOR
FP-02 ELEV 25'-9 1/2"
TOS 33'-1 1/2"

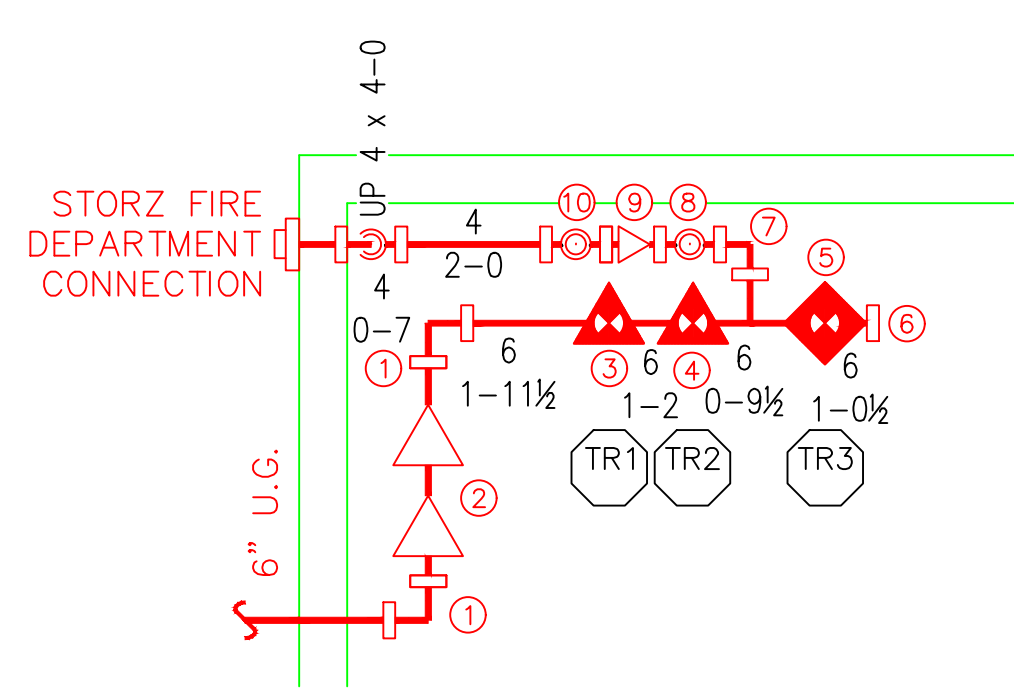
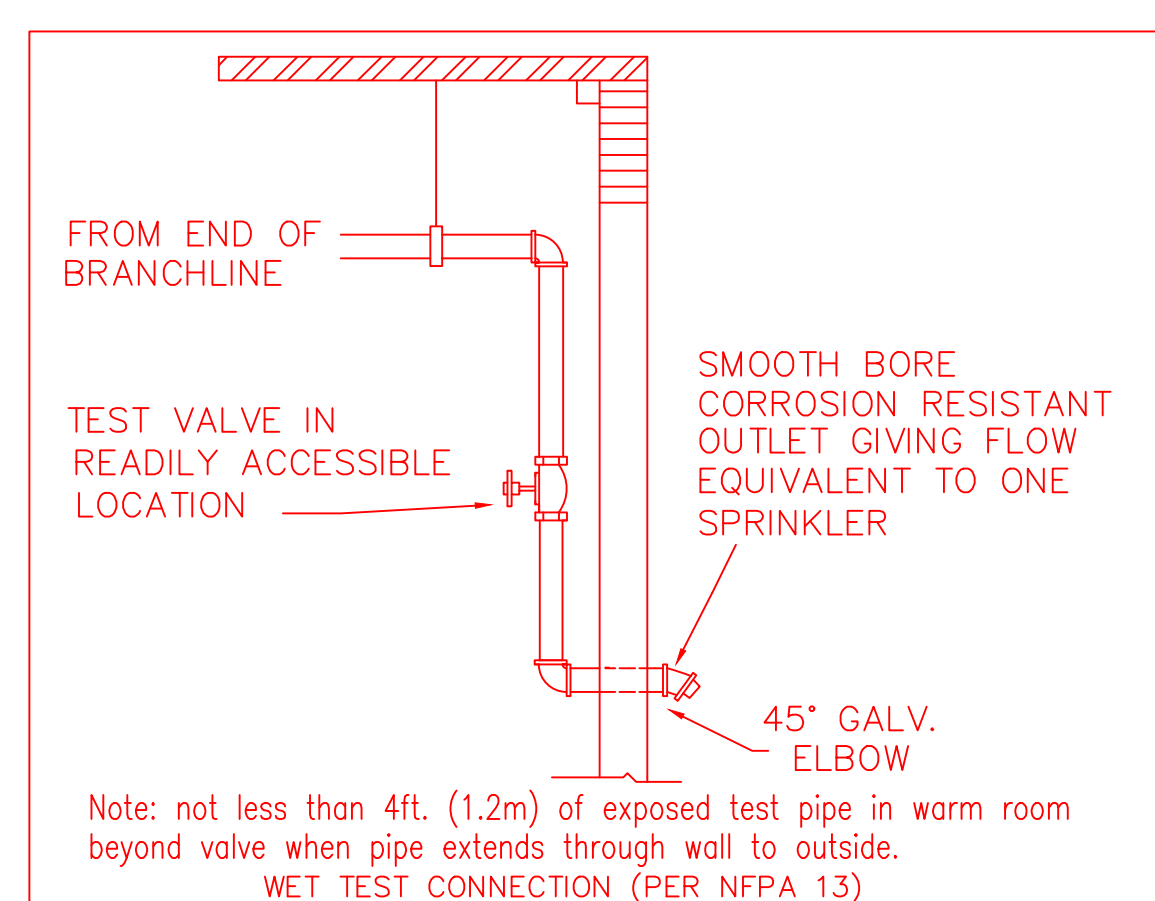
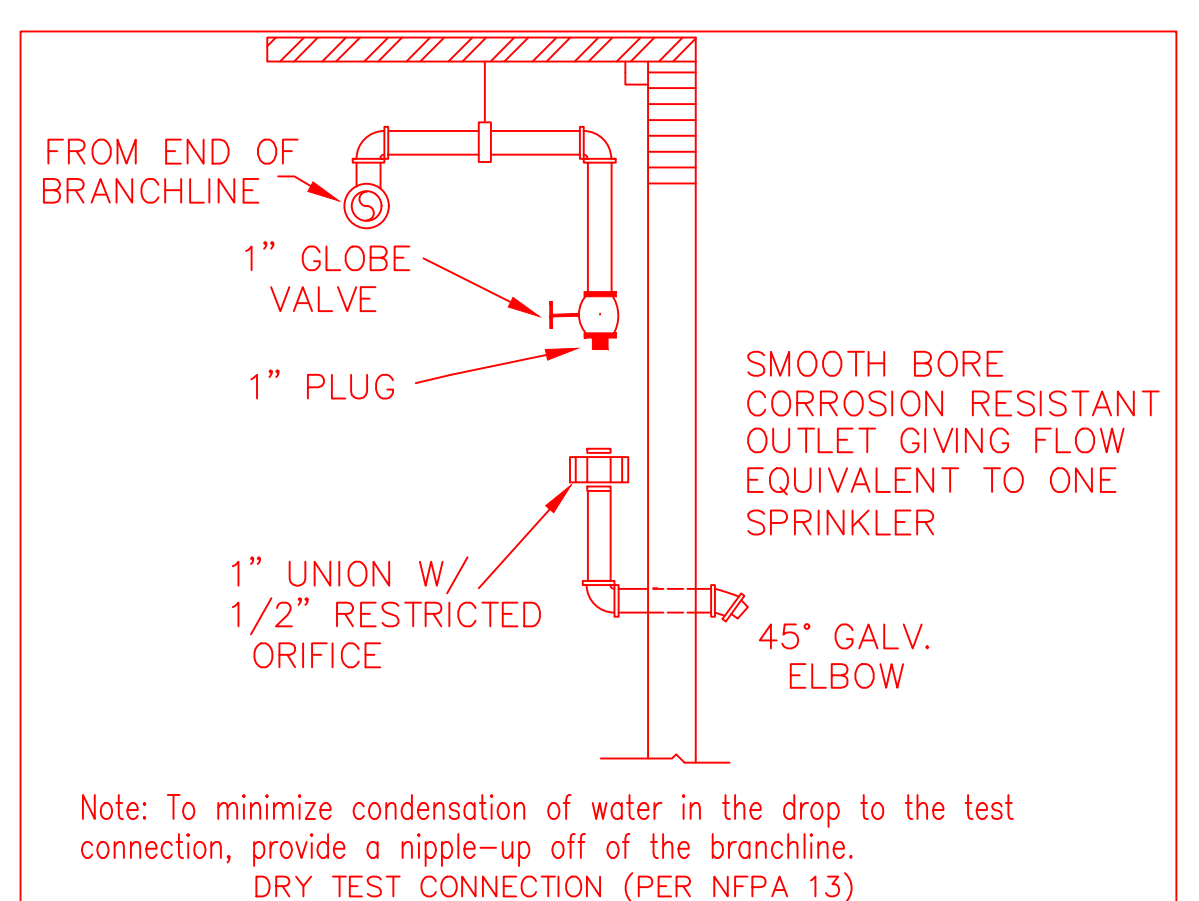
GENERAL NOTES

- ALL DIMENSIONS ARE CENTER TO CENTER U/N
- ALL PIPE 2" AND SMALLER TO BE SCH.40 BLACK STEEL U/N
- ALL PIPE 2 1/2" AND LARGER TO BE SCH.10 BLACK STEEL U/N
- ALL GROOVED FITTINGS TO BE D.I. BLACK U/N
- ALL SCREWED FITTINGS TO BE STD. WT. C.I. BLACK U/N
- ALL HANGER SPACING AND SIZES TO CONFORM TO NFPA #13.
- ALL NEW HEADS TO BE QUICK RESPONSE.
- NEW 6" D.I.U.G. SUPPLY FROM CITY BY OTHERS.
- ALL NEW HEADS TO BE QUICK RESPONSE.
- NEW 6" D.I.U.G. SUPPLY FROM CITY BY OTHERS.
- SUFFICIENT HEAT TO PREVENT FREEZING OF THE WET PIPE SPRINKLER SYSTEM IS REQUIRED TO BE FURNISHED BY THE BUYER/OWNER.

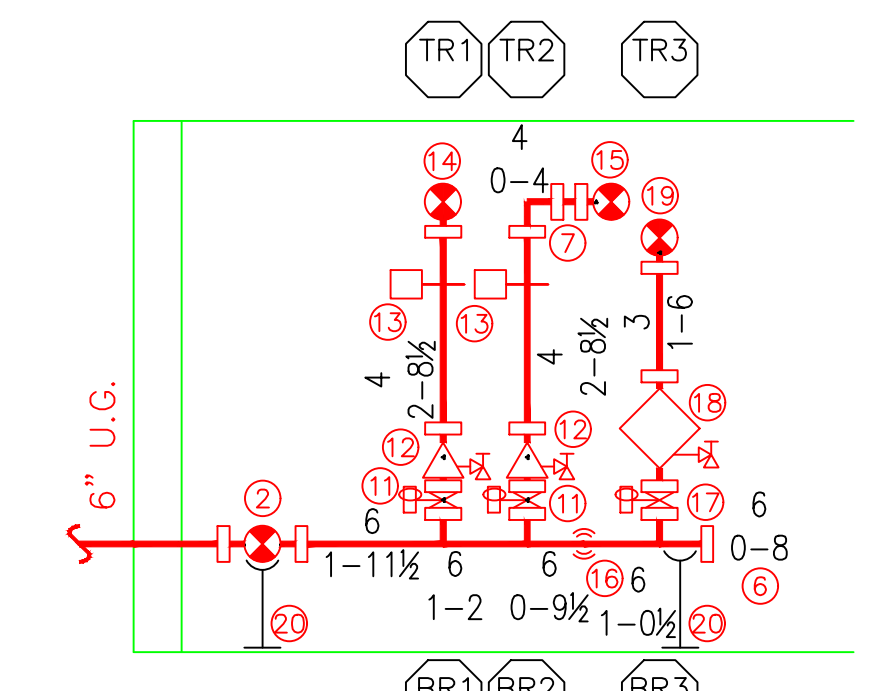
LEGEND:

- ⊙ UPRIGHT SPRINKLER ON A 1" SPRIG
- ⊙ RECESSED PENDENT SPRINKLER ON A 1" DROP
- ◁ HORIZONTAL SIDEWALL SPRINKLER
- RISE OR DROP
- GROOVED FLEXIBLE COUPLING
- ⊗ HYDRAULIC REFERENCE POINT
- HANGER

- FF \bar{c} = X'-X" FINISHED FLOOR TO PIPE CENTERLINE
- BJ \bar{c} = X'-X" BOTTOM OF JOIST TO PIPE CENTERLINE
- C \bar{c} = X'-X" CEILING DOWN TO PIPE CENTERLINE



3 RISER DETAIL
FP-02 ELEV 0'-0"
TOS 7'-4 1/2"



4 RISER SECTION
FP-02 ELEV 0'-0"
TOS 7'-4 1/2"

- 1 - 6" GROOVED ELBOW
- 2 - 6" AMES COLT C200 BVP BACKFLOW PREVENTOR
- 3 - 4" RESIDENTIAL WET RISER
- 4 - 4" RETAIL WET RISER
- 5 - 6" DRY RISER
- 6 - 6" GROOVED CAP
- 7 - 4" GROOVED ELBOW
- 8 - 4" TO BFP TEST BYPASS, VC #707C BFP
- 9 - 4" VC #705 BUTTERFLY VALVE
- 10 - 4" FROM BACKFLOW TEST BYPASS
- 11 - 4" VC #705 BUTTERFLY VALVE
- 12 - 4" VC #717R RISER CHECK VALVE
- 13 - 4" POTTER WATERFLOW SWITCH
- 14 - 2" RESIDENTIAL ZONE FEED MAIN
- 15 - 4" RETAIL ZONE FEED MAIN
- 16 - 4" TO BFP TEST BYPASS & FDC
- 17 - 3" VC #705 BUTTERFLY VALVE
- 18 - 3" TYCO DVP-1 DRY VALVE
- 19 - 3" DRY ZONE FEED MAIN
- 20 - PIPE STAND

DEAN & ALLYN, INC.
FIRE PROTECTION - SPECIAL HAZARD
116 LEWISTON ROAD, GRAY, MAINE 04039
(207)657-5846 FAX: (207)657-5847

APPROVED BY: [Signature]		DATE: [Date]	DESIGNED BY: [Signature]	DATE: [Date]	DRAWING TITLE: SECOND & THIRD FLOOR FIRE PROTECTION LAYOUT	NO. OF SHEET(S) SHOWN ON THIS SHEET: 27
DRAWN BY: [Signature]		DATE: [Date]	CHECKED BY: [Signature]	DATE: [Date]	JOB: MORAN'S MARKET RENOVATIONS 1576 FOREST AVENUE PORTLAND, ME 04103	NO. OF SPRINKLERS: 171
SCALE: 1/4"=1'-0" U/N		FOR PERMIT: [Signature]	DATE: [Date]	REVISIONS: [Signature]	CONTRACT WITH: D&H LLC 72 THYNOS MILLS ROAD, SPALDING, ME 04076	D&A CONTRACT NO. C171418